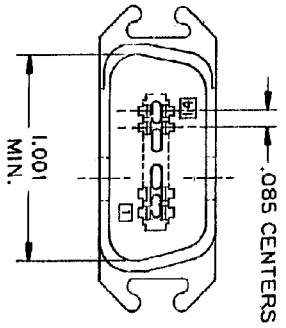
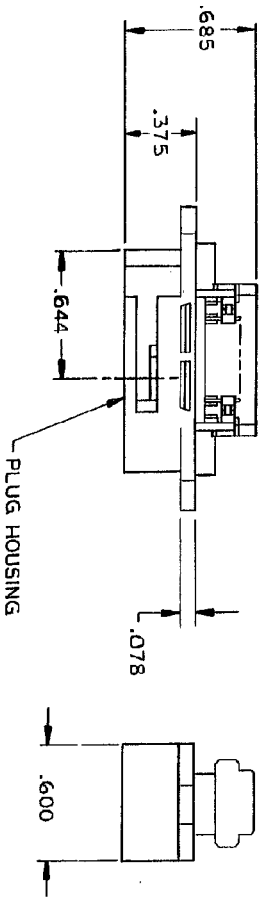
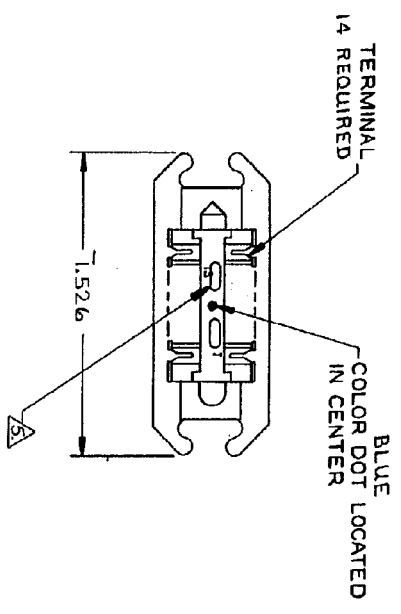


REV	DATE	REVISIONS	DATE	BY
00	00	REVISION	20/NOV/04	ZR/VM
J	J	REVISED PER ECO-06-00653		



1. THE CONTACT SURFACES OF THE TERMINALS ARE COATED WITH LUBRICANT.
 2. ALL DIMENSIONS SHOWN ARE FOR REFERENCE ONLY UNLESS OTHERWISE SPECIFIED.
- MATERIAL:
- HOUSING - THERMOPLASTIC (BLACK)
 TERMINALS - HIGH STRENGTH COPPER ALLOY PLATED WITH .000030 MIN GOLD OR GOLD FLASH OVER .000030 MIN PALLADIUM NICKEL ON CONTACT MATING SURFACE. .000050 MIN NICKEL UNDERPLATE OVER ENTIRE TERMINAL.
4. WIRE SIZE: 24 & 26 AWG SOLID & 24 AWG 7 STRANDS OF COPPER CONDUCTORS. MAX INSULATION DIAMETER OF .045 IS ACCEPTABLE FOR MOST APPLICATIONS.
- △ CORING MAY OR MAY NOT APPEAR AND IS AT THE DISCRETION OF TYCO ELECTRONICS.

DIMENSIONS		TOLERANCE		FINISH	
0	AS	0	AS	0	AS
1	AS	1	AS	1	AS
2	AS	2	AS	2	AS
3	AS	3	AS	3	AS
4	AS	4	AS	4	AS
5	AS	5	AS	5	AS
6	AS	6	AS	6	AS
7	AS	7	AS	7	AS
8	AS	8	AS	8	AS
9	AS	9	AS	9	AS
10	AS	10	AS	10	AS
11	AS	11	AS	11	AS
12	AS	12	AS	12	AS
13	AS	13	AS	13	AS
14	AS	14	AS	14	AS
15	AS	15	AS	15	AS
16	AS	16	AS	16	AS
17	AS	17	AS	17	AS
18	AS	18	AS	18	AS
19	AS	19	AS	19	AS
20	AS	20	AS	20	AS

552270-1 PART NO

TYCO ELECTRONICS CORPORATION

ASSEMBLY, PLUG, 14 POSITION, B SLOT

(CHAMP-LOCK, BAIL-LOCK)

SCALE: NTS

1 OF 1

REV. J

DATE: 20/NOV/04

BY: ZR/VM

REVISION: 00

ECO-06-00653

3-21-01

3-20-01

3-20-01

3-20-01

3-20-01

3-20-01

3-20-01

3-20-01

3-20-01

3-20-01

3-20-01

3-20-01

3-20-01

3-20-01

3-20-01

3-20-01

3-20-01

3-20-01

3-20-01